

Lithium Battery Operated **LIGHT TOWER**



LIGHT TOWER

- Solar Hybrid Light Tower
- Battery Operated Light Tower
- Diesel Generator Operated Light Tower

د ل ت س ف
LIGHTING TECHNOLOGY CO. Ltd.



شركة البروف
لتقنية الإنارة المحدودة

CONTENTS

◆ Al Rouf Lighting Technology Co.....	03
◆ Solar Hybrid Light Tower	04
◆ Battery Operated Light Tower	09
◆ Diesel generator light tower	12

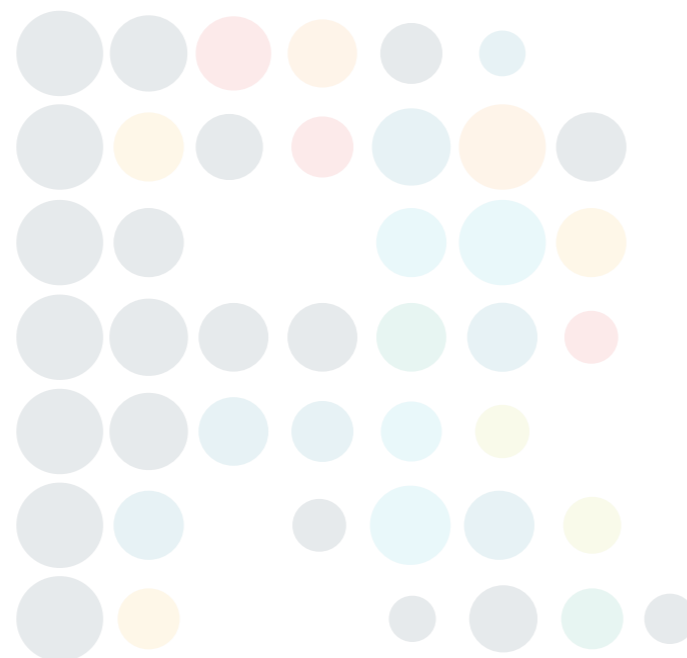
Al Rouf lighting Technology Co. Ltd.

I take immense pleasure in introducing to you Al Rouf Lighting Technology Company, an ISO 9001-2015 certified well established company in the business of importing, exporting, supplying and installation of LED lighting Fixtures.

We understand today's global focus on power saving which reflects directly on the survival of natural resources, therefore we concentrated our scope of work on well manufactured high-efficient LED products.

Supported by a well known partners such as Philips, Pelsan, Dialight and Fiberli. We undertake bulk operations of street lighting, factories, warehouses, offices, schools, airports and all kinds of construction projects. Keeping and carrying out a true commitment to improve and lead the lighting business in the Kingdom.

We will be honored to arrange a personal introductory session to further emphasize on our company's capabilities whenever it is needed.



“
*Looking forward
to get in touch
with you.*”

Lighting for us is not a Job it is a Passion

Our Goals and Mission

We are not just a company, we are unique solution provider that aims the satisfaction of their clients in every step of the project. We combine the experience with art and engineering to provide a solution that meets the clients requirements. With the help of our high qualified staff, we provide lighting service from A to Z in all manners starting from the lighting design and the products selection, going through the logistic and martial handling until the installation part.

Solar Hybrid Light Tower

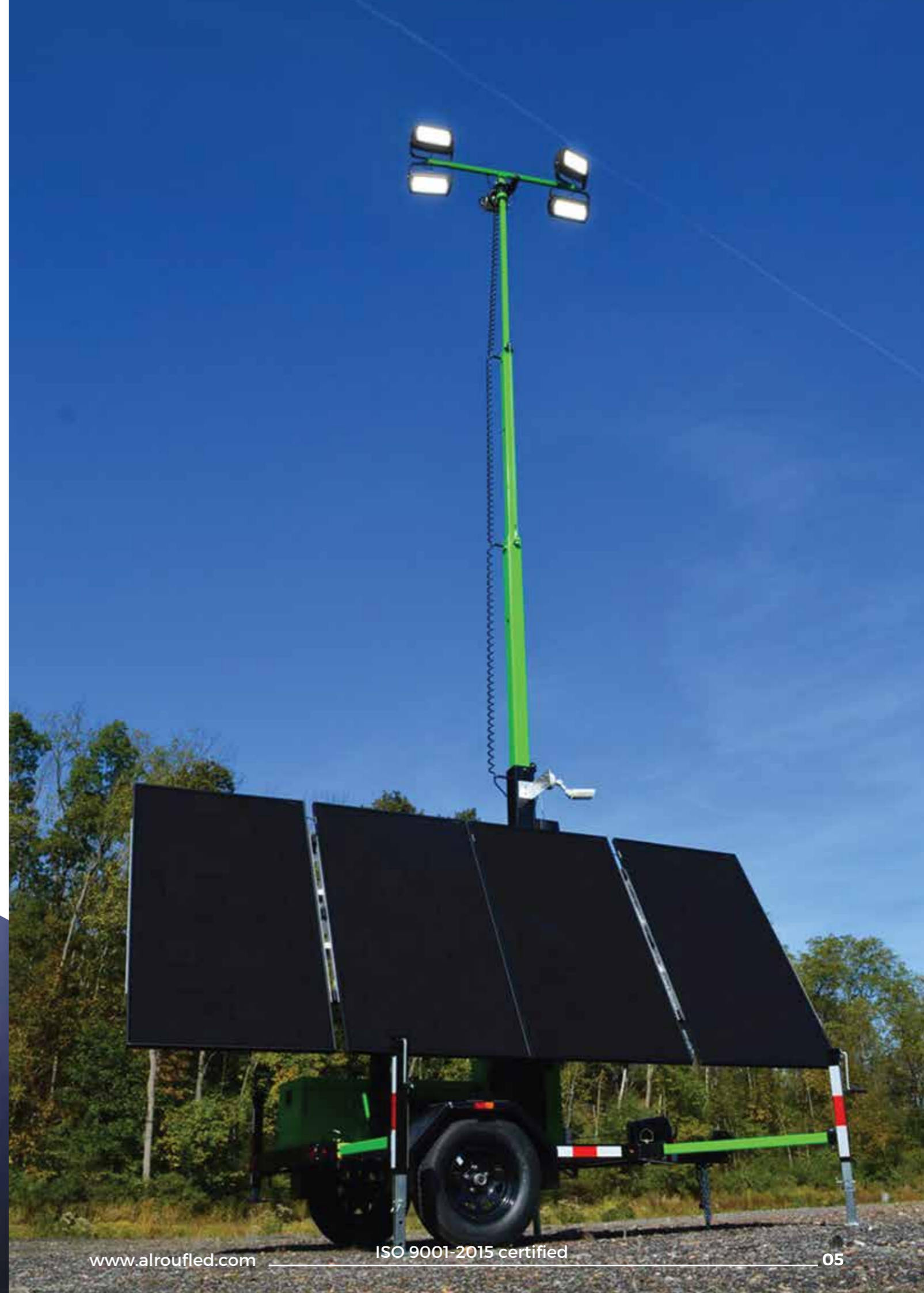
Power full Solar Hybrid Light Tower

These Solar Hybrid Light Tower provide an independent light source, are excellent pieces of equipment for a variety of different applications such as construction, mining, agricultural and industrial sectors and more. High bright light fixtures top a variable-height mast, powered by Solar generator. The units are quite stable and can withstand the tough environments



Features of Our Items

- ✓ Multi-directionally adjustable and tiltable floodlights
- ✓ 7 sections vertical tower 8.5 m, 340° rotatable
- ✓ Galvanized metalworks
- ✓ 80 µm powder coating
- ✓ Transversal forklift pockets for effective handling
- ✓ Plug & play, colour coded cables and connectors
- ✓ Guided main coiled cable to avoid damage during tower operation
- ✓ Certified wind stability up to 110 km/h
- ✓ 4 height adjustable stabilizers + front jockey wheel
- ✓ On board levels for guidance during stabilization
- ✓ Running time before refill 3000 hours
- ✓ 24volt DC Battery
- ✓ Recharging in 18 hours
- ✓ 230V 1PH Battery charger built-in



Solar Hybrid Light Tower

Model	Type	Configuration	(Dimension) (LxWxH)	Weight
UST-300 Block	Solar Light Tower	Solar Panel: 3 × 380W, Mono GEL Battery: 6 × 150Ah, DC12V, 10800W·h Lamp: 4 × 100W LED, IP65, 60000Lms Controller: 60A MPPT, 95% Efficiency Tilt: 90° Electric Mast: Steel Q235, Square Telescopic type, 6.5 m, 5 Sections, Electric Winch Lifting, 70kg Load, 117kph Windproof Base: Durable Base, 4× Forklift Holes, Manual Outrigger Charging Time: 8 hours Running Time: 21.6 hours	1050mm×1050mm×600mm (Shipping)	375kg
			1050mm×1050mm×2800mm (Transporting)	
			2000mm×1050mm×4100mm (Operating)	
UST-300	Solar Light Tower	Solar Panel: 1 × 460W, Mono GEL Battery: 2 × 200Ah, DC12V, 4800W·h Lamp: 4 × 50W LED, IP65, 30000Lms Controller: 40A MPPT, 95% Efficiency Mast: Aluminum Alloy, Round Telescopic type, 6 m, 4 Sections, Manual Winch Lifting, 40kg Load, 117kph Windproof Trailer: US Standard, Ball Hitch, Single Axle, Manual Outrigger Charging Time: 8.8 hours Running Time: 19.2 hours	1750mm×1450mm×1100mm (Shipping)	700kg
			2750mm×1450mm×2500mm (Transporting)	
			2750mm×2450mm×6200mm (Operating)	
UST-600	Solar Light Tower	Solar Panel: 2 × 460W, Mono GEL Battery: 4 × 200Ah, DC12V, 9600W·h Lamp: 4 × 100W LED, IP65, 60000Lms Controller: 40A MPPT, 95% Efficiency Mast: Aluminum Alloy, Round Telescopic type, 6 m, 4 Sections, Manual Winch Lifting, 40kg Load, 117kph Windproof Trailer: US Standard, Ball Hitch, Single Axle, Manual Outrigger Charging Time: 8.8 hours Running Time: 19.2 hours	1900mm×1500mm×1100mm (Shipping)	900kg
			2900mm×1500mm×2500mm (Transporting)	
			2900mm×2500mm×6200mm (Operating)	

Solar Hybrid Light Tower

Model	Type	Configuration	(Dimension) (LxWxH)	Weight
UST-900 Cube	Solar Light Tower	Solar Panel: 3 × 380W, Mono GEL Battery: 6 × 150Ah, DC12V, 10800W·h Lamp: 4 × 100W LED, IP65, 60000Lms Controller: 60A MPPT, 95% Efficiency Tilt: 90° Electric Mast: Steel Q235, Square Telescopic type, 6.5 m, 5 Sections, Electric Winch Lifting, 70kg Load, 117kph Windproof Base: Durable Base, 4× Forklift Holes, Manual Outrigger Charging Time: 8 hours Running Time: 21.6 hours	1100mm×1200mm×2300mm (Shipping)	1175kg
			1100mm×1200mm×2600mm (Transporting)	
			4700mm×4700mm×7000mm (Operating)	
UST-1200 Cube	Solar Light Tower	Solar Panel: 4 × 380W, Mono GEL Battery: 6 × 200Ah, DC12V, 14400W·h Lamp: 4 × 150W LED, IP65, 90000Lms Controller: 60A MPPT, 95% Efficiency Tilt: 90° Electric Mast: Steel Q235, Square Telescopic type, 6.5 m, 5 Sections, Electric Lifting, 70kg Load, 117kph Windproof Base: Durable Base, 4× Forklift Holes, Manual Outrigger Charging Time: 8 hours Running Time: 19.2 hours	1100mm×1200mm×2300mm (Shipping)	1500kg
			1100mm×1200mm×2600mm (Transporting)	
			4700mm×4700mm×7000mm (Operating)	
UST-900	Solar Light Tower	Solar Panel: 3 × 460W, Mono GEL Battery: 6 × 200Ah, DC12V, 14400W·h Lamp: 4 × 150W LED, IP65, 90000Lms Controller: 60A MPPT, 95% Efficiency Tilt: 90° Electric Mast: Steel Q235, Square Telescopic type, 6.5 m, 5 Sections, Manual Winch Lifting, 70kg Load, 117kph Windproof Trailer: US Standard, Ball Hitch, Single Axle, Manual Outrigger Charging Time: 8.8 hours Running Time: 19.2 hours	2200mm×1600mm×2200mm (Shipping)	375kg
			3200mm×1600mm×2500mm (Transporting)	
			2000mm×1050mm×4100mm (Operating)	

Solar Hybrid Light Tower

Model	Type	Configuration	(Dimension) (L×W×H)	Weight
UST-900 Cube	Solar Light Tower	Solar Panel: 3 × 380W, Mono GEL Battery: 6 × 150Ah, DC12V, 10800W·h Lamp: 4 × 100W LED, IP65, 60000Lms Controller: 60A MPPT, 95% Efficiency Tilt: 90° Electric Mast: Steel Q235, Square Telescopic type, 6.5 m, 5 Sections, Electric Winch Lifting, 70kg Load, 117kph Windproof Base: Durable Base, 4× Forklift Holes, Manual Outrigger Charging Time: 8 hours Running Time: 21.6 hours	1100mm×1200mm×2300mm (Shipping)	1175kg
			1100mm×1200mm×2600mm (Transporting)	
			4700mm×4700mm×7000mm (Operating)	
UST-1200 Cube	Solar Light Tower	Solar Panel: 4 × 380W, Mono GEL Battery: 6 × 200Ah, DC12V, 14400W·h Lamp: 4 × 150W LED, IP65, 90000Lms Controller: 60A MPPT, 95% Efficiency Tilt: 90° Electric Mast: Steel Q235, Square Telescopic type, 6.5 m, 5 Sections, Electric Lifting, 70kg Load, 117kph Windproof Base: Durable Base, 4× Forklift Holes, Manual Outrigger Charging Time: 8 hours Running Time: 19.2 hours	1100mm×1200mm×2300mm (Shipping)	1500kg
			1100mm×1200mm×2600mm (Transporting)	
			4700mm×4700mm×7000mm (Operating)	
UST-900	Solar Light Tower	Solar Panel: 3 × 460W, Mono GEL Battery: 6 × 200Ah, DC12V, 14400W·h Lamp: 4 × 150W LED, IP65, 90000Lms Controller: 60A MPPT, 95% Efficiency Tilt: 90° Electric Mast: Steel Q235, Square Telescopic type, 6.5 m, 5 Sections, Manual Winch Lifting, 70kg Load, 117kph Windproof Trailer: US Standard, Ball Hitch, Single Axle, Manual Outrigger Charging Time: 8.8 hours Running Time: 19.2 hours	2200mm×1600mm×2200mm (Shipping)	375kg
			3200mm×1600mm×2500mm (Transporting)	
			2000mm×1050mm×4100mm (Operating)	

Lithium Battery Operated Light Towers

About Lithium Battery Operated Light Towers

Our mobile Lithium Battery Operated Light Towers is perfect for common applications. Light up large areas without noise. Batteries are automatically charged from solar.

As a manufacturer, the customer design, special requirement is adopted. We produce the items as what you need. External power supply, light wattage, light numbers, trailer design, all can be designed as per your demand.



Lithium Battery Charging Light Tower

Model	LED	Battery	Trailer	Mast	Charging/ Lighting
SDE160-2L	4x8" Tyres	1x120AH	3m manual telescope mast	2x50W 15,000 lumens Total 100W DC12V	8/12 Hrs
SDE500-4L	2x13"/R165" Tyres	4x120AH AGM	7m manual telescope mast with Auto-Lock Winch	4x50W 30,000lumens Total 200W DC24V	8Hrs/20 Hrs
SDE580-4L	2x14"/R185" Tyres, with mechanical brake	6x150AH AGM	7m manual telescope mast with Auto-Lock Winch	4x120W 72,000lumens Total 480W DC24V	8Hrs/20Hrs
SDE840-6L	2x15"/R215" Tyres, with mechanical brake	8x200AH AGM	7m manual telescope mast with Auto-Lock Winch	6x120W 108,000lumens Total 720W DC24V	8Hrs/20Hrs
PT-MLT1	2x15"/R215" Tyres, with mechanical brake	10x250AH DC24V AGM	9m Hydraulic telescope mast	4x300W 180000lumens Total 1200W DC24V	10Hrs/20Hrs

Option available with Lithium Battery



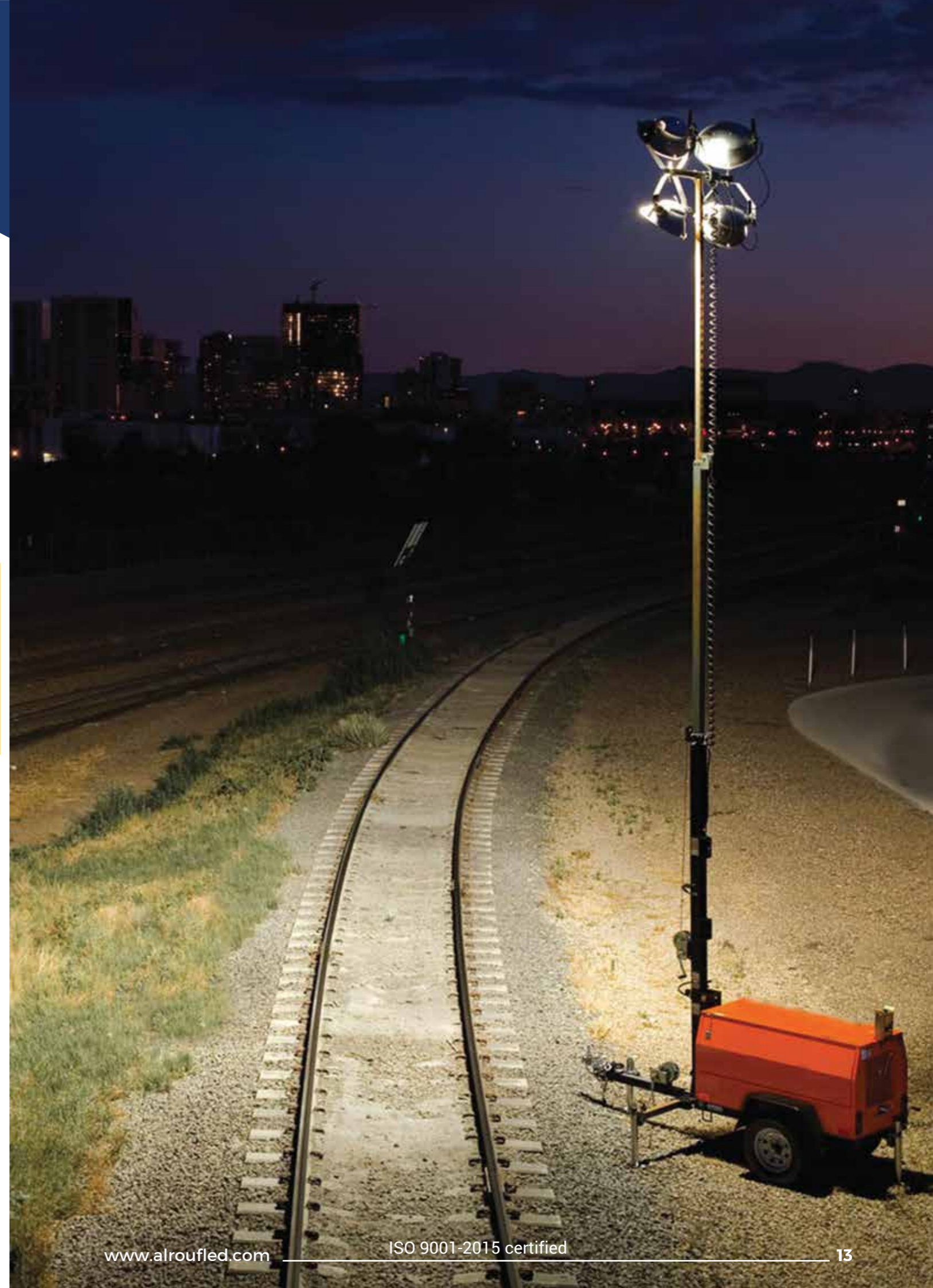
Diesel Generator Operated Light Towers

Power full Diesel Light Towers

These diesel light towers provide an independent light source, are excellent pieces of equipment for a variety of different applications such as construction, mining, agricultural and industrial sectors and more. High bright light fixtures top a variable-height mast, powered by diesel generator, has large and double walled fuel tank. The units are quite stable and can withstand the tough environments

Features of Our Items

- ✓ Safe working environment
- ✓ Reduces noise in work area
- ✓ Safe and easy lifting operation
- ✓ Safe lifting capabilities
- ✓ Enables use of existing power for lights
- ✓ Sound-attenuated housing
- ✓ Vertical lifting
- ✓ Forklift sockets
- ✓ Single-point lifting system
- ✓ Generator disconnect



Diesel Generator Operated Light Towers

LIGHTING TOWER										
MODEL	LTD-6700T		LTY-V7		LTK-C7		LTK-V7		LTK-H7	
Mast Height (m)	4		8		7.5		8		9	
Frequency(Hz)	50	60	50	60	50	50	60	50	60	
Rated voltage(V)	230	240/120	230	240/120	230	230	240/120	230	240/120	
Rated power (kW)	4.5	5.0	6	7	5.4	6	7	6	7	
Max.Output (kW)	5.0	5.5	7	8	5.94	7	8	7	8	
Power Outlet Sockets	1*16A	1*16A	1*16A	1*16A	1*16A	1*16A	1*16A	2*16A	2*16A	
Fuel Consumption (L/H)	1.77		2.4		1.85		1.7		1.7	
Fuel Tank Capacity (L)	16		30		74		30		40	
Fuel Tank Hours	9.5		12.5		40		17		23	
Noise Level (7m)dB(A)	72	72	76	76	76	76	76	74	74	
Weight (KGS)	200		800		750		800		1630	
"Dimension in Operation (L x W x H) mm"	1500*980*4000		2990x1300x8000		2850x1105x7500		2990x1300x8000		2400x1800x9000	
"Dimension in Transport (L x W x H) mm disassembly"	1100*850*800		1950x1300x1010		1370x750x1000		1950x1300x1010		2400x1800x2540	
"Load Capacity in 20FT (units) disassembly"	20	20	4	4	8	4	4	/	/	
"Load Capacity in 40HQ (units) disassembly"	44	44	9	9	24(16)	9	9	4	4	
ENGINE										
Engine model	LD186FAE		LD380		Z482		D1105-E2BG		D1105-E2BG	
Speed (rpm)	3000	3600	1500	1800	3000	1500	1800	1500	1800	
Prime Power (kw)	5.7	6.3	12	14.4	8.3	8.4	10.1	8.4	10.1	
Cooling System	Air-cooled		Water-cooled		Water-cooled		Water-cooled		Water-cooled	
Oil capacity	1.65		4.5		2.5		5.1		5.1	

Diesel Generator Operated Light Towers

ALTERNATOR										
Alternator Model	LA204/2		LA130/4		EK2MCT		LT3N-130/4		LT3N-130/4	
Continued Power (kVA)	4.5	5.0	7	8	6	7	8	7	8	
Excitation mode	Self-excitation and constant voltage(AVR)				Capacitor exciter					
Alternator Insulation	H									
Protection Grade	IP23		IP23		IP23		IP23		IP23	
Mast	Manual		Manual		Manual		Manual		Hydraulic	
Section No. (Extened)	3		4		4		4		8	
Mast Rotation	180°		359°		359°		359°		359°	
Mast Extension Time	35seconds		45seconds		45seconds		45seconds		14seconds	
Mast Descend Time	20 seconds		30 seconds		30 seconds		30 seconds		10 seconds	
Lighting										
Type of lights	Metal halide lamp or LED		Metal halide lamp or LED		Metal halide lamp or LED		Metal halide lamp or LED		Metal halide lamp or LED	
Number & Power of the lights	4*1000W		4*1000W		4*1000W		4*1000W		4*1000W	
Mast Lighting & Extension	Manual		Manual		Manual		Manual		Hydraulic operation	
			Electric (Option)		Electric (Option)		Electric (Option)			
Light angle turning	Manual		Manual		Manual		Manual		Electric	
Luminous flux	4*110000=440000		4*110000=440000*		110000=440000*		110000=440000*		110000=440000	
Illum Area (5 Lux min)	2500		3900		3000		3900		3900	
Lamps Rotation	75° (Manual)		75° (Manual)		75° (Manual)		75° (Manual)		75° (Automatic)	
Protection Glass	IP33		IP33		IP33		IP33		IP33	
Color Temperature	4200K		4200K		4200K		4200K		4200K	
Trailer										
Braking System	/		/		/		/		Parking braking	
Hitch	Ball type/ O Ring option		Ball type/ O Ring option		Ball type/ O Ring option		Ball type/ O Ring option		Ball type/ O Ring option	
Tire Rim Size	252mm		165/R14"		155R13"		165/R14"		185/R14"	
Speed	<5km/h		<80km/h		<80km/h		<80km/h		<80km/h	



Dammam:

Prince Metib st, Izdhar District
Alrouf Trading Building
Tel/Fax : 966 53 861 3645
sales@alroufled.com

Jeddah:

Commercial Centre for Dr.Hassan Nasr
Baladiyah Street, Al Aziziyah
Tel/Fax : +966-56 472 7973
sales@alroufled.com

الرووف
LIGHTING TECHNOLOGY CO.Ltd.



شركة الرووف
لتقنية الإنارة المحدودة