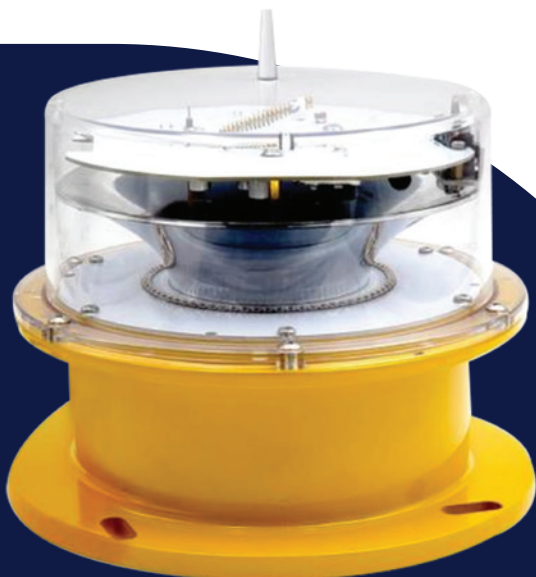


alrouf
LIGHTING TECHNOLOGY CO.Ltd.



شركة الروف
لتقنية الإنارة المحدودة



Alrouf
Medium intensity
Airport
Warning Light

TX-MB-01(L)
MEDIUM INTENSITY TYPE B

www.alroufled.com

Alrouf

Medium intensity Airport Warning Light Type B



TX-MB-01 (L) type B

Products Description

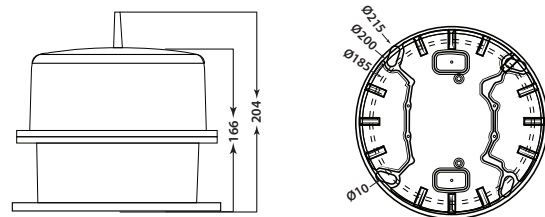
TX-MB-01(L) type B Medium-intensity aviation obstruction light,

base adopt high intensity casting aviation aluminum , fully sealed structure, Adaptive range $\phi 200 \sim 185\text{mm}$ of installation size; Light source adopt high efficient SMT LED chip and combine with reflecting optical structure, which have the specific of high brightness and long lifespan; Management circuit with Strong lightning protection and With the surge protection device, which can adopt to extremely bad working environment.

Features

- Housing adopt high intensity casting aviation aluminum, fully sealed structure.
- Adopt high efficient SMT LED chip, which have the specific of high brightness, low power consumption and long long lifespan.
- Adopt with independent research and development advanced optical lighting system
- Spotlight angle meets CAAC and ICAO requirements.
- With surge protection device, which can adopt to extremely bad working environment.
- Adopt advanced high thermal conductive stoving varnish technology, which provide excellent heat dissipation, it can shortage lamp's weight and volume efficiently.
- With the impact resistance, anti lightning, resistant to sunlight, anti snow, can resist typhoons, hail and other severe weather.
- With over-current protection function.
- It can be customized functions of GPS Beidou wireless synchronization, LORA-10KM wireless sync, Remote control and telemetering.

Dimension



Warranty Description

The product is full guaranteed for two years and five years warranty from the date of sale. Within 2 years, repairing cost, material cost, shipping cost are free of charge (only in China), if necessary we can replace by new product for free. From 3-5 years repairing cost is free of charge, user should burden component cost and shipping cost in repairing, charging standard as per our company policy. But if there is one of following situation, user can't enjoy full warranty.

1. Lamp damage caused by man-made damage or force majeure.
2. Not installed and used in the manner specified in the attachment of the contract.
3. Not installed and used according to the product instructions.
4. Not install and use normally.
5. Dismantling or repairing the product without obtaining the consent of our company.
6. Unable to provide evidence that the bills were purchased through normal channels.
7. Over the period of full guarantee.

Specification

Performed Standard	CAAC	MH/T 6012-2015 and AC-137-CA-2017	Aviation obstruction light
	ICAO	ICAO Annex 14 Volume I The 8th Edition	Airport design and operation
	FAA	Advisory Circular 150/5345-43J	Specification for Obstruction Lighting Equipment
Model	TX-MB-01 (L)	Vertical Divergence	3°
Power supply	AC220V, DC180V	Horizontal Out-put	360
Power frequency	50HZ~60HZ, DC	Overall Size	215*215*204mm
Average power	≤2.5W	Installation size	Φ185~200mm*4*M8
Working mode	Flash 20times/min	Ambient Temperature	-40°C~+55°C
Emitted color	Red	Weight	2.3kg (not include mounting bracket)
Light source	LED	Wind load	240km/h
Shell materia	Aviation Aluminum alloy	Luminous mirror material	optical PC
Light source lifespan	≥200000h	Protection grade	IP65
Surge protection rating	5KA	Relative humidity	0%~95%
		Salt spray	Can be exposed to salt spray
Get wet in the rain	Can be exposed to rain in any wind direction	Insulation characteristic	Between the input end and the shell: 1.414kVDC, 10s no breakdown
Radiation	Can be exposed to solar radiation	EMC standards	Emitted:EN55022(CISPR2 2) class A harmonic wave:EN61000-3-2,-3
Seismic resistance	10~500Hz,2G 10min/cycle, XYZ 60 minutes for each axis		
Mean Time Between Failure	≥200000h,MIL-HDBK-217 F(25°C)	Leakage current	<10uA
Electric shock protection	Has	Altitude	≥2500m
Effective intensity	night : 2000cd		
Photocell stage	50/100Lux		