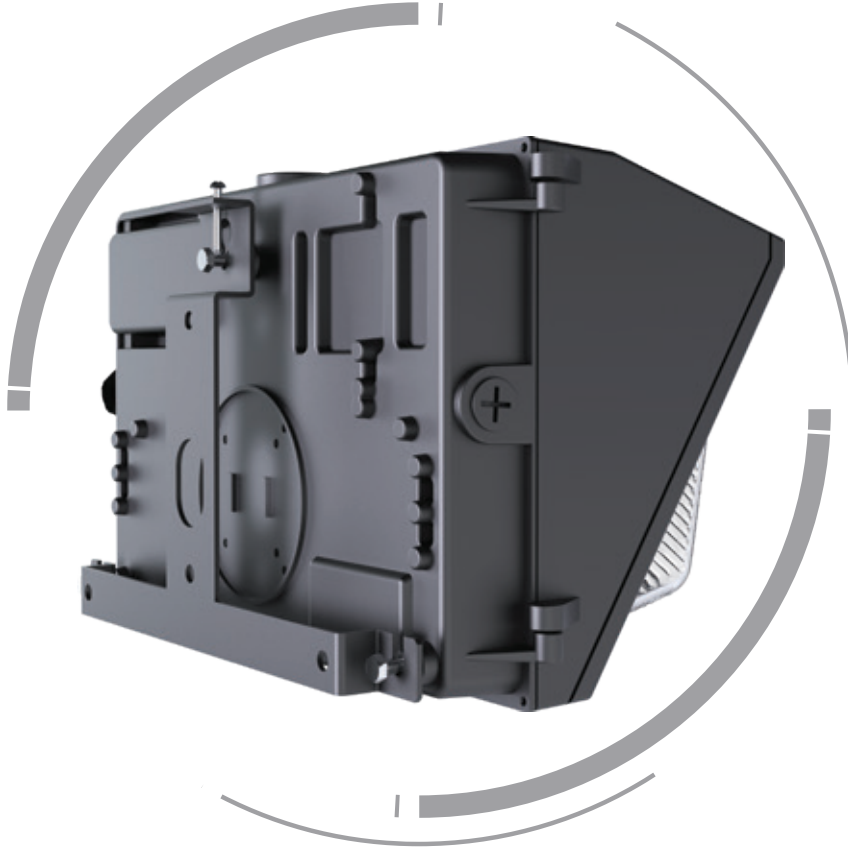




ALROUF WALL PACK LIGHT



Performance

 Philips Lumileds	 IP66
 40W / 60W / 90W / 120W / 150W	 IK08
 4500~5500K (2500~5500K Optional)	 95x90° / 115x100° / 90x80° / 90x85°
 ≥70	 Corrosive Resistant Polyester Powder
 L70>100,000 Hours	 Operating Temperature:-30°C to +45°C (-22°F to 113°F)
 100-277 VAC	 Storing Temperature:-40°C to +80°C (-40°F to 176°F)
 0.95 min	 15% to 95% RH



Classical Style with Excellent Lighting Performance

With a classic, glass lens design, Diamond is an easy, one-for-one, replacements for legacy wall pack fixtures for any place needing a security boost. It matches the appearance of most outdated HID or metal halide wall packs while covering the same footprint and hiding any unsightly marks and fading.

Diamond features a built-in dusk-to-dawn on/off photocell, which brings bright and crisp light turning night instantly into day with no glare or hot spot.



Product Features

- High system light efficacy 130 LPW.
- Semi or full cut-off luminaire, eliminating undesirable sky glow and glare with dark-sky-friendly performance.
- Glass lens never turn yellowish.
- Easy installation & maintenance cost reduction.
- IP66 and IK08 rated for durability.



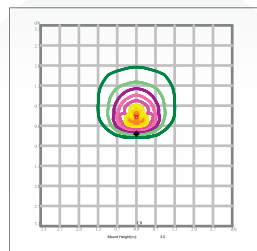
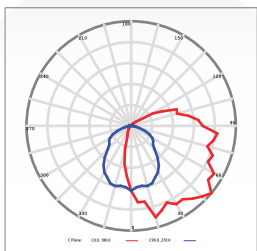
Typical model specification

Product Number	Wattage	Voltage	Lumens	Net weight(kg/lbs)	Dimensions
EL-WP-40	40W	130lm/W	5,200lm	3.45 kg/7.6lbs	360×235×195mm 14.2×9.3×7.7in
EL-WP-60	60W	130lm/W	7,800lm	7.35 kg/16.2lbs	
EL-WP-90	90W	130lm/W	11,700lm	7.35 kg/16.2lbs	
EL-WP-120	120W	130lm/W	15,600lm	7.6 kg/16.75lbs	464×231×235mm 18.2×9.1×9.2in
EL-WP-150	150W	130lm/W	19,500lm		

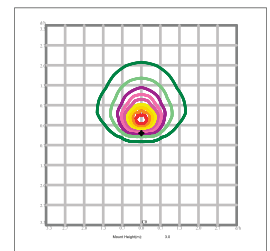
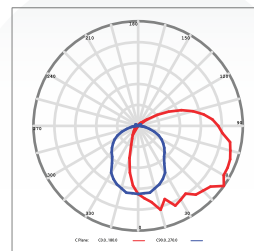
Photometrics

Semi cutoff - Without Additional Louver

95x90° Lens (40W/60W/90W)

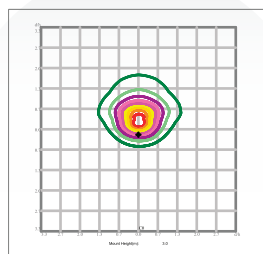
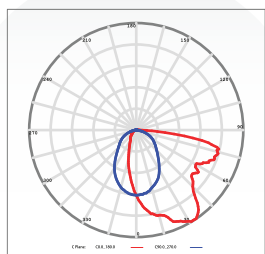


115x100° Lens (120W/150W)

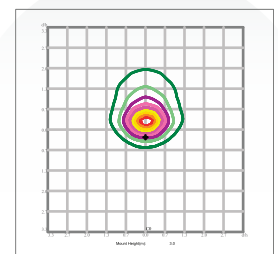
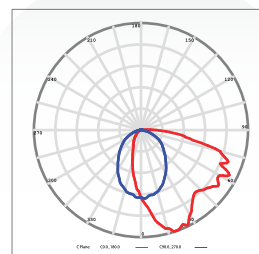


Cutoff - With Additional Louver

90x80° Lens (40W/60W/90W)



90x85° Lens (120W/150W)

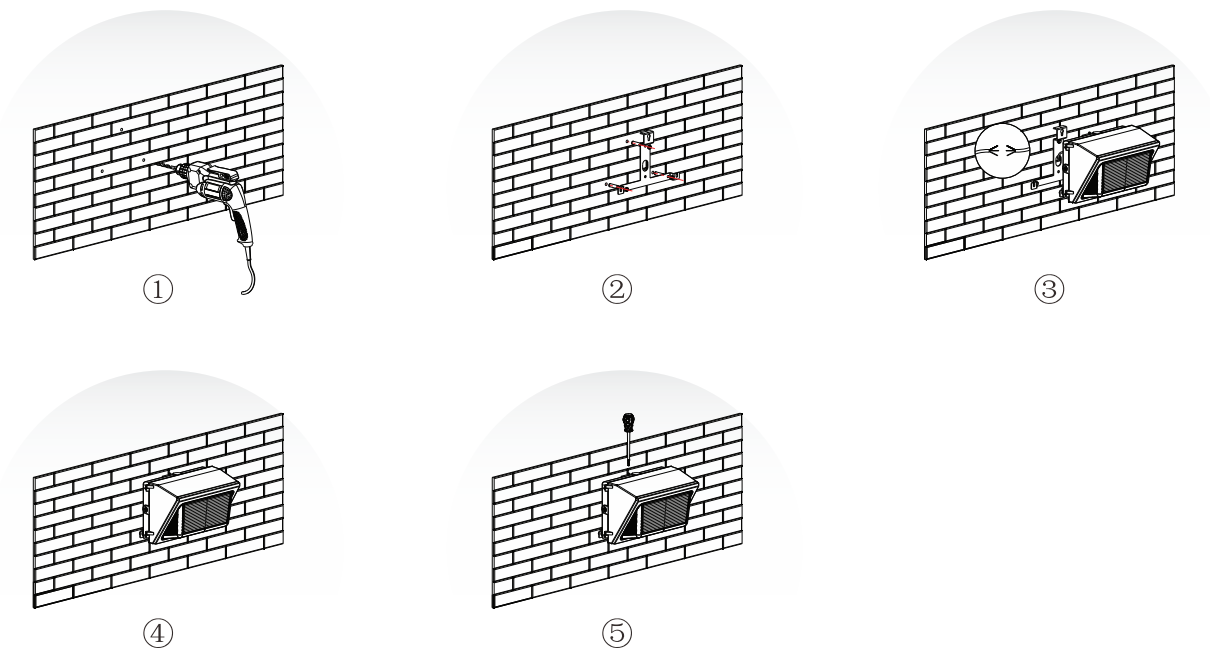


Mounting

For high performance and long term reliability, the light should be installed in free air.

Wall Mounting

1. Drilling hole on the wall after determining the installation position, the spacing of hole 150mm.
2. Fix bracket on the wall.
3. Wiring.(Connect supply wires to luminaire wire leads per the wiring diagram using methods that comply with all applicable codes.)
4. Fix fixture on the bracket with bolt.
5. Tighten the screws and fix the lamp and bracket.



Drill Holes Mounting

1. Open the fixture and drill holes on required mounting points, holes MUST not exceed 19/64", warranty will be void if holes exceed 19/64" or are made in any other part of the Wall Pack.
2. Wiring.(Connect supply wires to luminaire wire leads per the wiring diagram using methods that comply with all applicable codes.)

